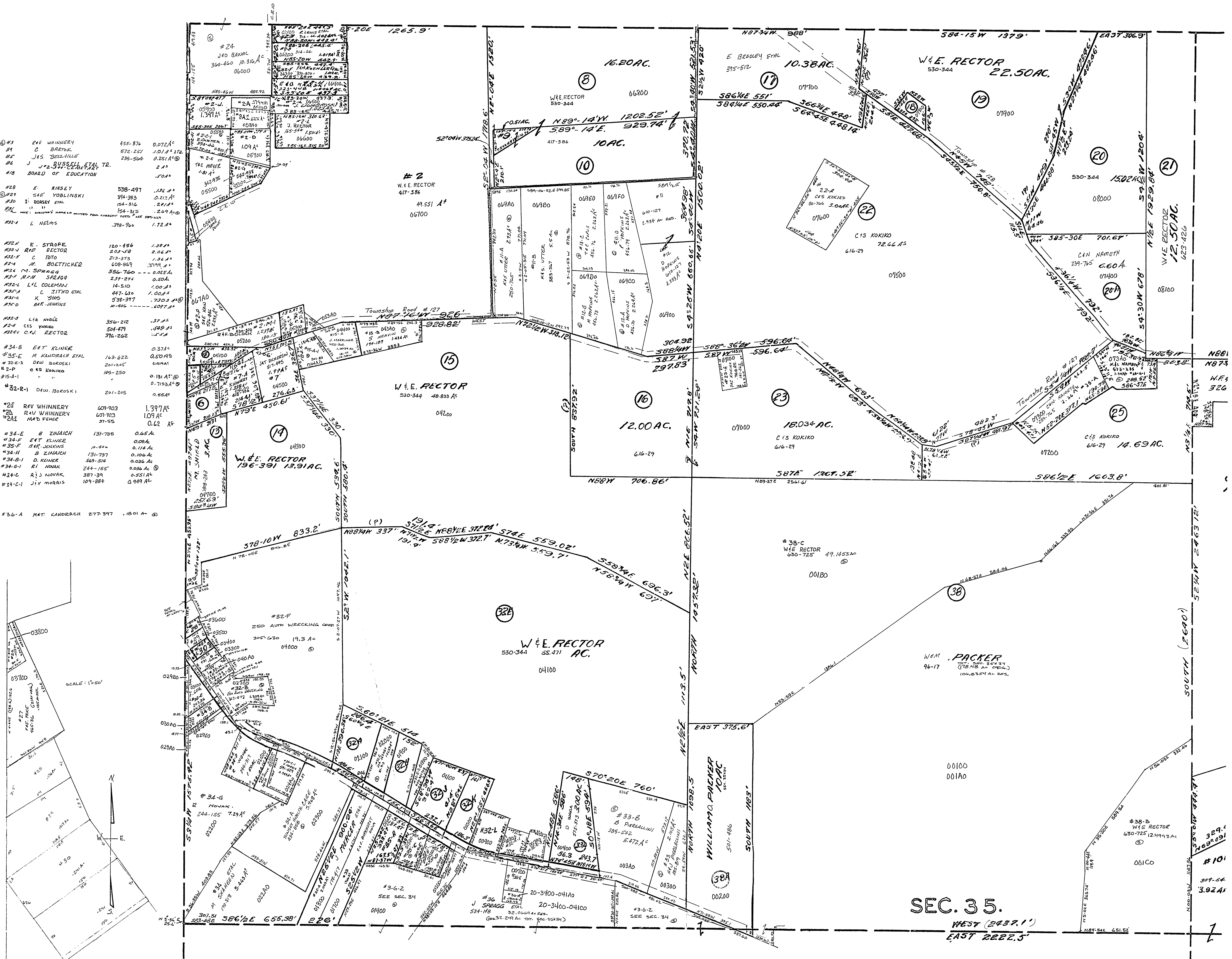


20-3500-



#23	REV WHINNERY	455-876	0.072 A
#24	C. BARTON	572-251	1.01 A
#25	J.A.S. BOEHLER	235-564	0.251 A
#26	J. & J. RUSSELL ETAL TR.		2 A
#27	BOARD OF EDUCATION		2.04 A
#28	E. KINSEY	538-497	1.12 A
#29	SHE VOBLINSKI	374-383	0.212 A
#30	I. DORSET ETAL	764-316	2.11 A
#31	"	154-235	2.29 A
#32	L. NELMS	378-704	1.72 A
#33	E. STROPE	120-184	1.38 A
#34	W.E. RECTOR	203-150	2.06 A
#35	C. TIO	712-373	1.24 A
#36	M. BOETTCHER	608-952	2.07 A
#37	M. SPRAGG	584-760	0.015 A
#38	M.F.M. SPRAGG	237-274	0.50 A
#39	L.L. COLEMAN	14-510	1.00 A
#40	C. ZITKO ETAL	447-518	1.00 A
#41	K. SOKS	538-377	2.03 A
#42	B.K. JENKINS	1-102	0.07 A
#43	L.L. WAGLE	354-212	0.37 A
#44	C.S. YAKO	504-479	0.45 A
#45	O.W. RECTOR	374-262	1.17 A
#46	E.T. KUNSE		0.37 A
#47	M. KANDER ETAL	743-622	0.004 A
#48	D.W. BORDSKI	201-005	0.004 A
#49	C.S. KOKIKO	145-250	0.131 A
#50	"	154-235	0.719 A
#51	D.W. BORDSKI	241-295	0.66 A
#52	REV WHINNERY	604-903	1.397 A
#53	R.W. WHINNERY	601-903	1.09 A
#54	M.D. FENKE	371-955	0.62 A
#55	B. ZINMACH	131-795	0.05 A
#56	E.T. KUNSE	11-444	0.004 A
#57	B.K. JENKINS	131-737	0.118 A
#58	B. ZINMACH	349-514	0.100 A
#59	D. KEINER	244-155	0.036 A
#60	R.I. NOVAK	387-391	0.351 A
#61	A.J. NOVAK	109-284	0.449 A
#62	J.V. MORRIS		
#63	MAT. KANDER	277-347	1.501 A

SEC. 35.  
WEST 243.1'  
EAST 222.5'

MT. PLEASANT TWP  
SECTION 35, T.7, R.3.  
SCALE: 1"=200'